

All information hereon is the copyright of Philip Milson Associates Limited. Copying in full or in part is forbidden without the written permission from Philip Milson Associates Limited.

All levels and dimensions must be checked on site by contractor prior to commencement of works. Any variations must be reported to Philip Milson Associates Limited.

Approval Tender Construction Information Preliminary As Built

Design Status: _____
 Drawing Number: 1702-3.01
 Project Title: THE NANT INN, PADESWOOD ROAD, CHILZUM
 Drawing Title: PROPOSED LICENSING PLAN
 Designers: _____
 Date: _____
 Checked: _____
 Scale: _____

Architecture / Interior Design / Project Management / Brand Design / Marketing / Planning
 Design Consultants
 pma
 Design Consultants
 T: +44(0) 161 367 2320 F: +44(0) 161 367 2322 W: pma@designconsultants.com E: info@pma@designconsultants.com

RECEIVED
 FLINTSHIRE COUNTY COUNCIL
 DIRECTORATE OF
 ENVIRONMENT & REGENERATION

LEGEND

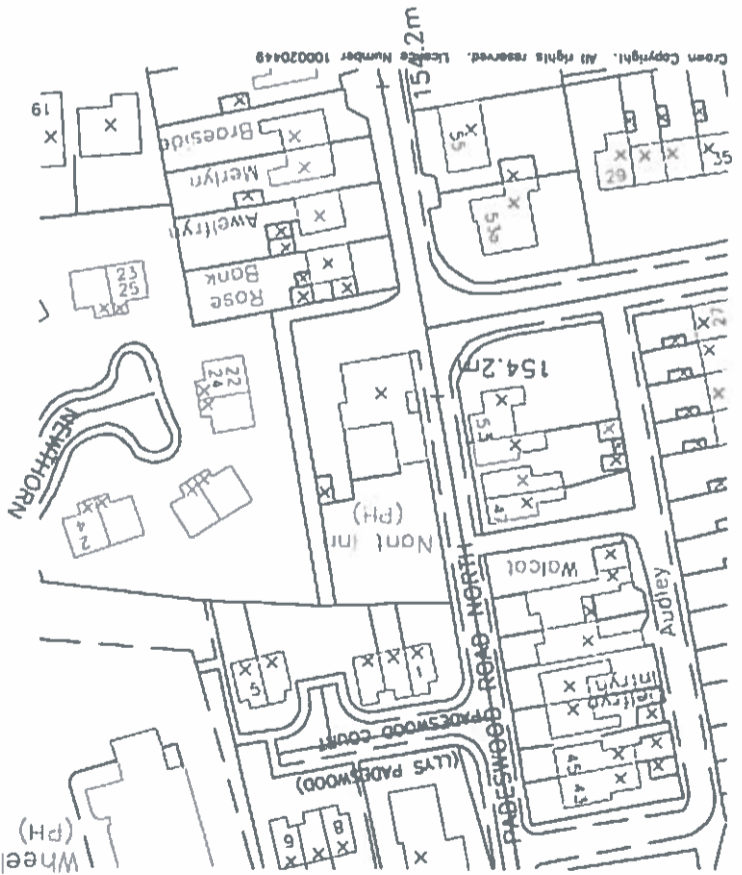
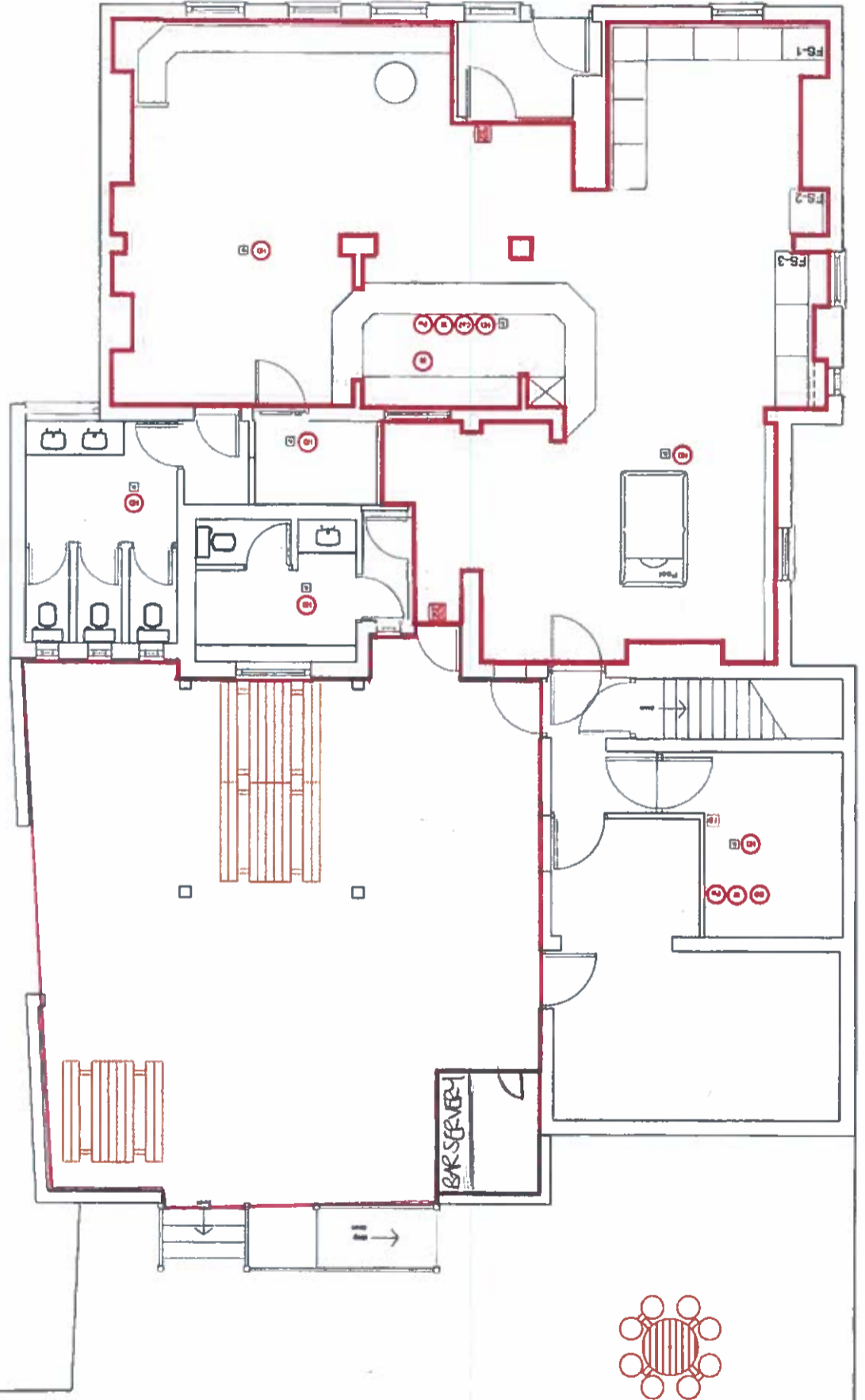
AREA FOR LICENSABLE ACTIVITIES

FIRE DETAILS:

- CO2 EXTINGUISHER
- WATER EXTINGUISHER
- ILLUMINATED EXIT SIGN
- FIRE ALARM SOUNDER
- BREAK GLASS POINT
- NEW ALARMA BREAK GLASS POINTS COMPLETE
- LOCATED AS SHOWN ON PLAN

ELECTRICAL LEGEND:

- HEAT SMOKE DETECTOR
- EMERGENCY LIGHTING
- POWDER EXTINGUISHER
- FIRE BLANKET
- ALL EXTINGUISHERS ARE TO COMPLY WITH THE CURRENT BS ENX STANDARD



Appendix B